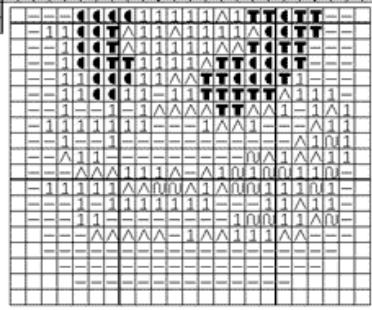


Poket / Pochette

Poket / Poche →



NOTE:

Same Color Key
is used for both boy
& girl teddy bear charts.

Teddy "Mimi and Plume" / Ours "Mimi et Plume"
XC1172

ART 117

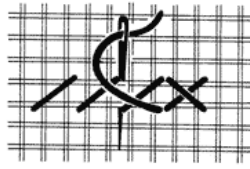
DMC 6 strand embroidery floss

Mouliné Spécial DMC

DMC 28 count linen - color # 3866

Ultra V. L. Mocha Brown

Design size 14" L x 10" W



○ Button / Bouton

Cross Stitch - Point de Croix

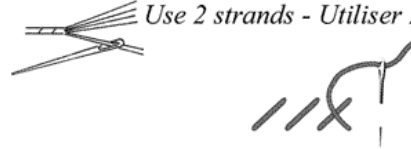
Use 2 strands - Utiliser 2 brins



- | | | | | | |
|----|----|------|----|-----|-------|
| 1 | ■ | 792 | 13 | - - | Blanc |
| 2 | ■ | 3807 | 14 | FF | 739 |
| 3 | ++ | 3839 | 15 | PP | 738 |
| 4 | \\ | 3840 | 16 | MM | 437 |
| 5 | YY | 162 | 17 | ≡≡ | 436 |
| 6 | ZZ | 3756 | 18 | ■■ | 435 |
| 7 | ■ | 844 | 19 | TT | 869 |
| 8 | ▶▶ | 317 | 20 | ◆◆ | 3781 |
| 9 | HH | 414 | 21 | XX | 3823 |
| 10 | UU | 318 | 22 | ZZ | 3855 |
| 11 | ^^ | 415 | 23 | ** | 3827 |
| 12 | 11 | 762 | 24 | ** | 976 |

Half Stitch - Demi-Point

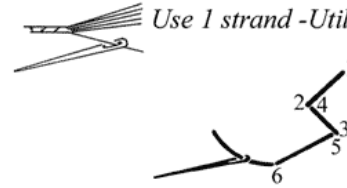
Use 2 strands - Utiliser 2 brins



- | | | | | | |
|---|----|------|----|-----|-------|
| 3 | ∴ | 3839 | 11 | ^^ | 415 |
| 4 | \\ | 3840 | 12 | ∴ | 762 |
| 7 | ■ | 844 | 13 | - - | Blanc |
| 9 | ■ | 414 | | | |

Straight Stitch - Point Lancé

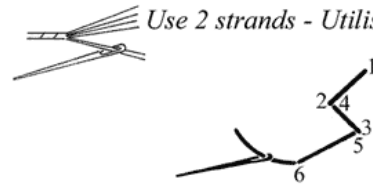
Use 1 strand - Utiliser 1 brin



- | | | |
|---|---|-----|
| 7 | — | 844 |
| 9 | — | 414 |

Straight Stitch - Point Lancé

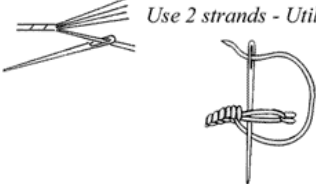
Use 2 strands - Utiliser 2 brins



- | | | |
|---|-------|-----|
| 7 | | 844 |
|---|-------|-----|

Bar Stitch - Point de bride

Use 2 strands - Utiliser 2 brins



- | | | |
|----|---|-------|
| 13 | ~ | Blanc |
|----|---|-------|

