



## Crochet Black Shawl

**Size:** 52" square

**Level:** Experienced

### Abbreviations:

bo = bobble

ch(s) = chain

dc = double crochet

dc3tog = double crochet 3 together

dc4tog = double crochet 4 together

lp(s) = loop(s)

P-st = pattern stitch

rem = remain(ing)

rep = repeat

sc = single crochet

sc2tog = single crochet 2 together

sl st = slip stitch

sp = space

sp = space

st(s) = stitch(es)

t-ch = turning chain

tr = treble

yo = yarn over

\*...\* = repeat instructions between asterisks as many times as directed.

### Materials:

- Senso Metallics (Article 740), size 3, color # 1404 – 54 balls (100yards/ball)
- **Optional** crochet ball trim - add 5 balls
- **Optional** clear 5/16" diameter glue on "jewels" – 95
- Crochet Hook: 3mm, US C/2 or D/3

### Pattern Stitch:

Start with a treble working the first two lps only, dc3tog including one lp of treble, finish treble, dc 3x around upper part of treble.

### Step by Step Descriptions

Wwith yo twice, insert hook into ch or ch3 sp, yo and draw up 1 lp, yo and draw through 2 lps on hook, \* yo, insert hook into next ch or same sp, yo and draw loop through 2 lps on hook \* rep 3 x, yo and draw through 4 lps on hook, yo and draw through 2 lps on hook, yo and draw through rem 2 lps, dc 3x around the top of tr (working sts into ch refers to 1<sup>st</sup> row only, in subsequent rows all sts are worked into ch3 sp).

**Instructions:**

With Senso Metallics ch 353.

**Row 1:** Start a P-st in 6<sup>th</sup> ch from hook and into next 3chs, \* ch3, skip 3 sts below P-st into next 4 chs \* rep across to last ch, tr, ch7 & turn.

**Row 2:** \* P-st into ch3 sp, ch3 \* ep across, tr into top of t-ch, ch4 & turn.

**Row 3:** \* P-st into ch3 sp, ch 3 \* rep across ending with P-st and tr into 4<sup>th</sup> t-ch, ch 7 & turn.

Repeat rows 2 & 3 until the shawl is square, ending with a row 2.

Fasten off.

**Border:**

Start away from a corner and attach yarn to the bottom of a treble along a **side edge**, ch2 and work dc3tog over the treble, \* ch2, work 4dc bo into 2<sup>nd</sup> ch of next row's t-ch, ch5, sl st into 3<sup>rd</sup> ch from hook, ch2, work 4dc bo into next ch, ch2, dc4tog over next tr \* rep to **corner** (ch 2, 4dc bo, ch5, sl st into 3<sup>rd</sup> ch from hook, ch2, 4dc bo) all into top of corner st, continue along **top edge** ch 2, work dc4tog over ch3 sp, ch2, work 4dc bo into 2<sup>nd</sup> dc, ch5, sl st into 3<sup>rd</sup> ch from hook, ch2, work 4dc bo into next st \*, rep to corner ending with dc4tog over ch3 sp.

Repeat corners and edges to complete round, close with a sl st.

Fasten off.

**Optionals:**

**Bobbles:** Make as many as are needed around the border.

Attach yarn with a sl st to a picot along border leaving a long enough tail to weave through the chain sts and into the ball, ch12, holding the chain sts in front of the hook sc 8x into 2<sup>nd</sup> ch from hook, sc 2x into 1<sup>st</sup> sc made, sc 2x into next st 7x (16sts), continue to work in spiral rounds and sc 30x, stuff with thread. \*sc2tog, sc into next st \* rep until ball is closed.

Fasten off.

**Jewels:** glue at regular intervals around the inner edge of the shawl's border.

▶ Début - Start - Inizio - Inicio - Principio - Begin - Begyndelse - Początek - начало.

▽ Fin : couper le fil - End: cut the yarn - Fine: tagliare il filo - Finat: cortar el hilo -  
 Fin: cormar o fio - Ender: de draad afknippen - Afslutning: Bryd garnet - Koniec :  
 uciąć nitkę - конец: обрежьте нить.

○ Maille en l'air - chain stitch - punto catenella/maglia volante - punto al aire - malha  
 no ar - losse - luftmaske - oczko kółcuszka - воздушная петля

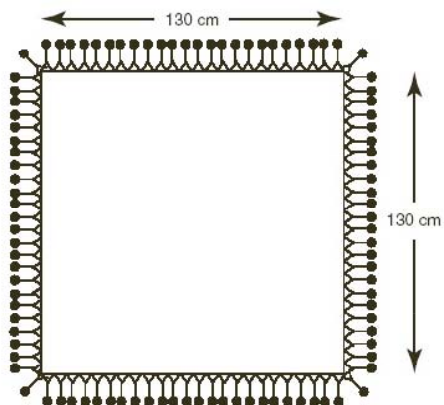
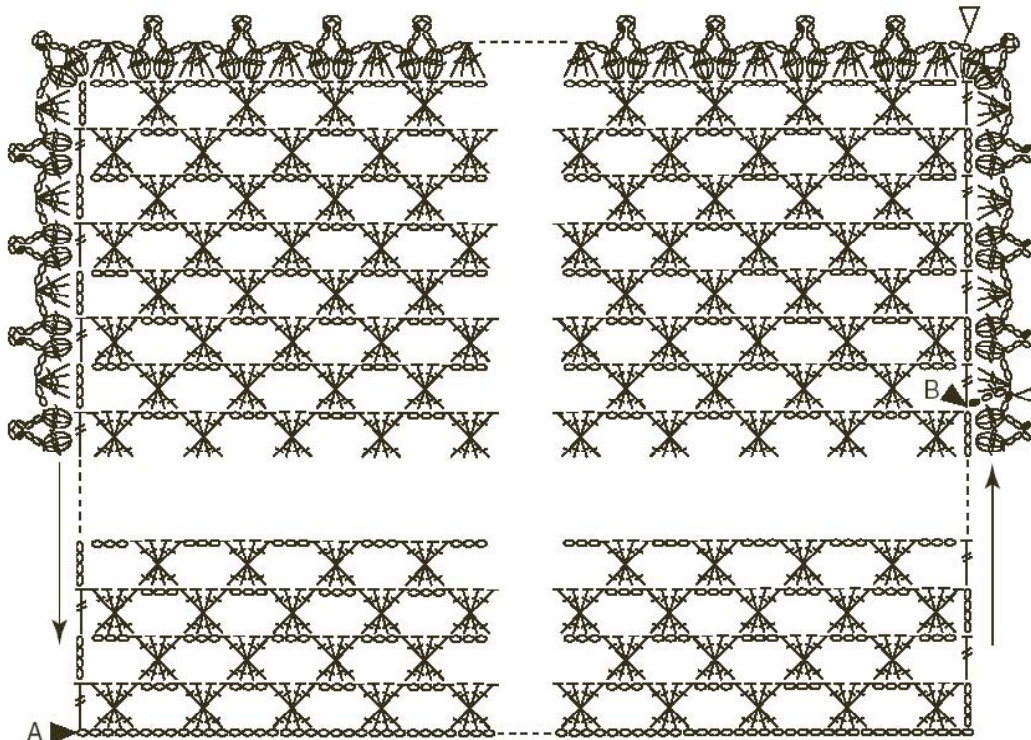
● Maille coulée - slip stitch - maglia bassissima - el punto raso - a malha rasa -  
 halve vaste - kæde-maske - oczko ściśle zamykające - закрепительная петля




× Maille serrée - single crochet - maglia bassa - el punto bajo - a malha baixa -  
 vaste - fastmaske - oczko półslupkę - столбик без накида

† Bride - double crochet - maglia alta - brida - o pau - stółke -  
 stangmaske - Slupek - столбик с накидом

† Double bride - treble (tr) - maglia alta doppia - doble hebra - malha dupla -  
 dubbel stółke - dobbelt stangmaske - podwójny slupek - столбик с 2 накидами

✕ 4 doubles brides en X - 4 trebles forming an X - quattro maglie alte a X -  
 cuatro dobles puntos altos en X - 4 paus duplos em x - kruisstółke bestaande uit  
 vier dubbele stółkes - 4 dobbelt stangmasker i X - cztery podwójne slupki  
 krzyżowane - 4 четыре скрещенный двойные столбика.



SENSO	
METALLICS Art 740	N° 3 
 1404	40

