

10

20

30

40

50

60

70

80

90

10

20

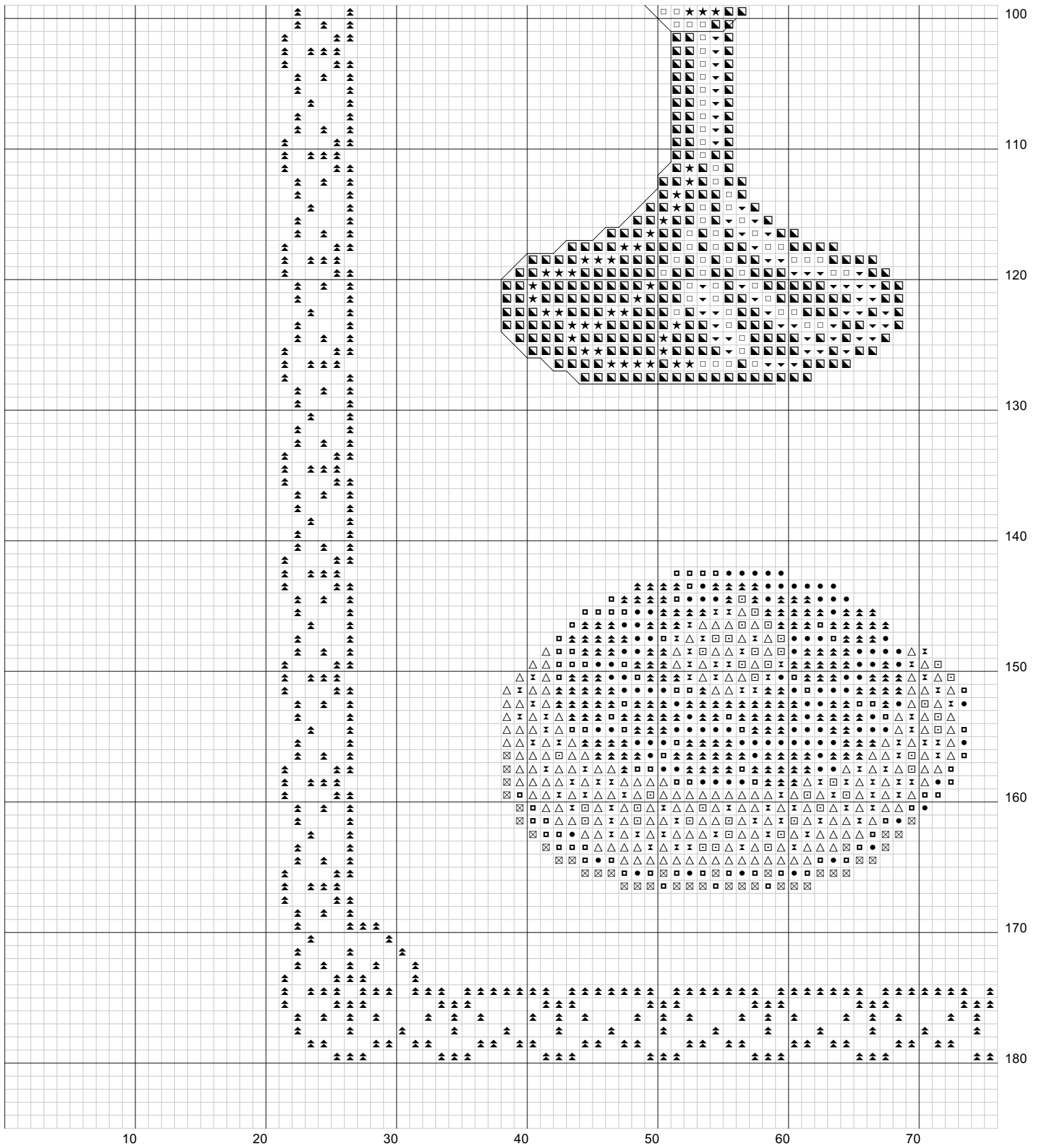
30

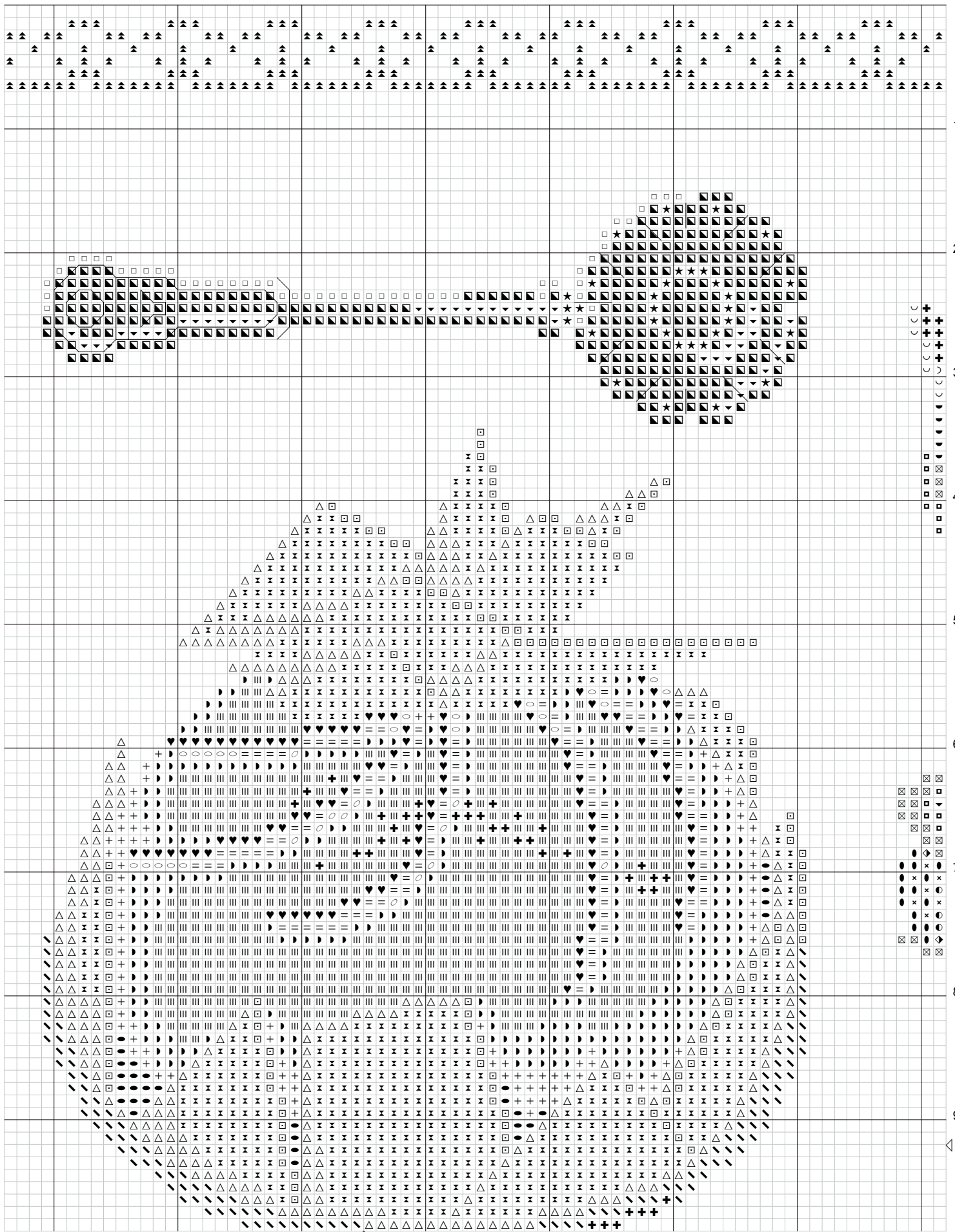
40

50

60

70





10

20

30

40

50

60

70

80

90

80

90

100

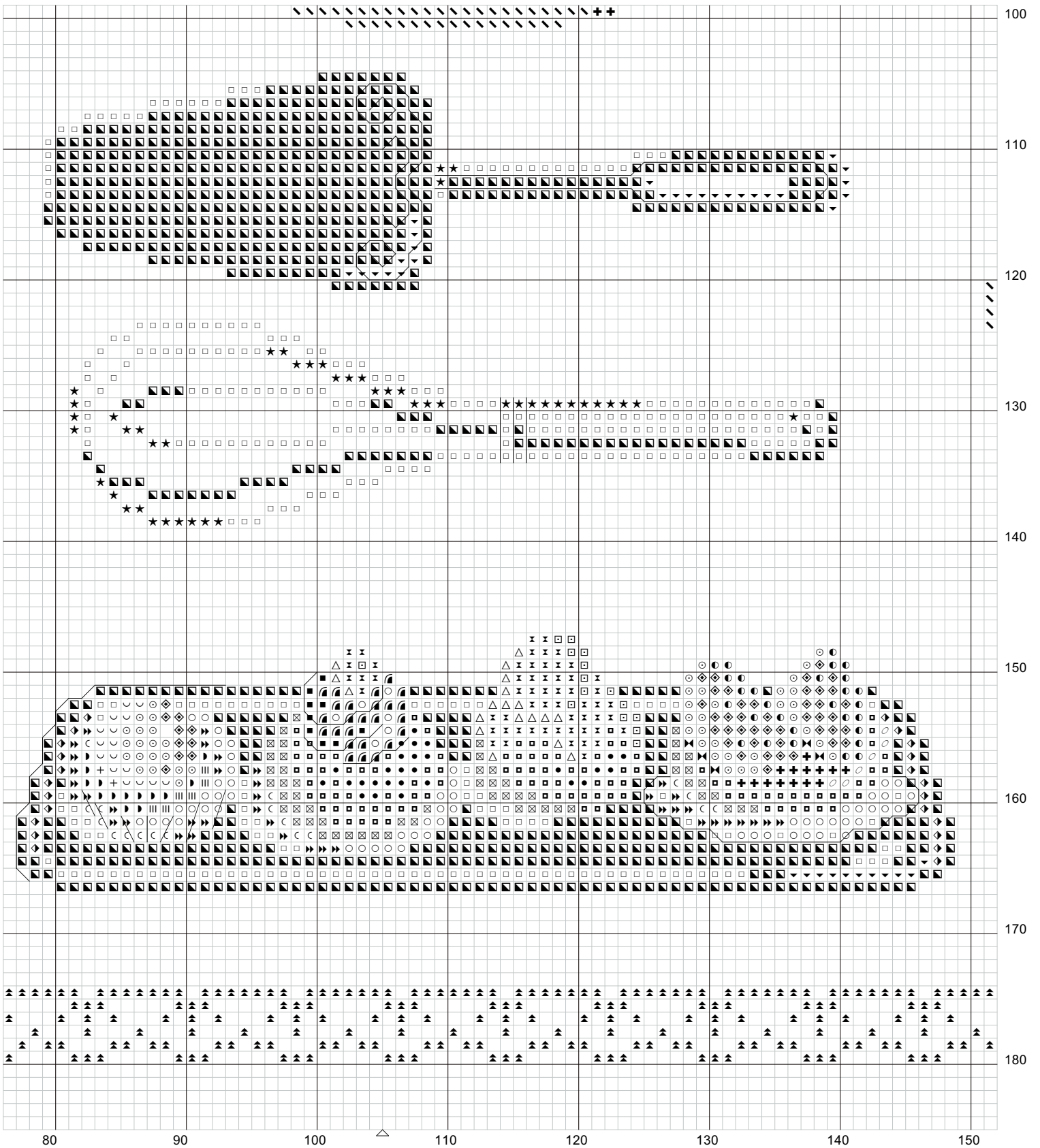
110

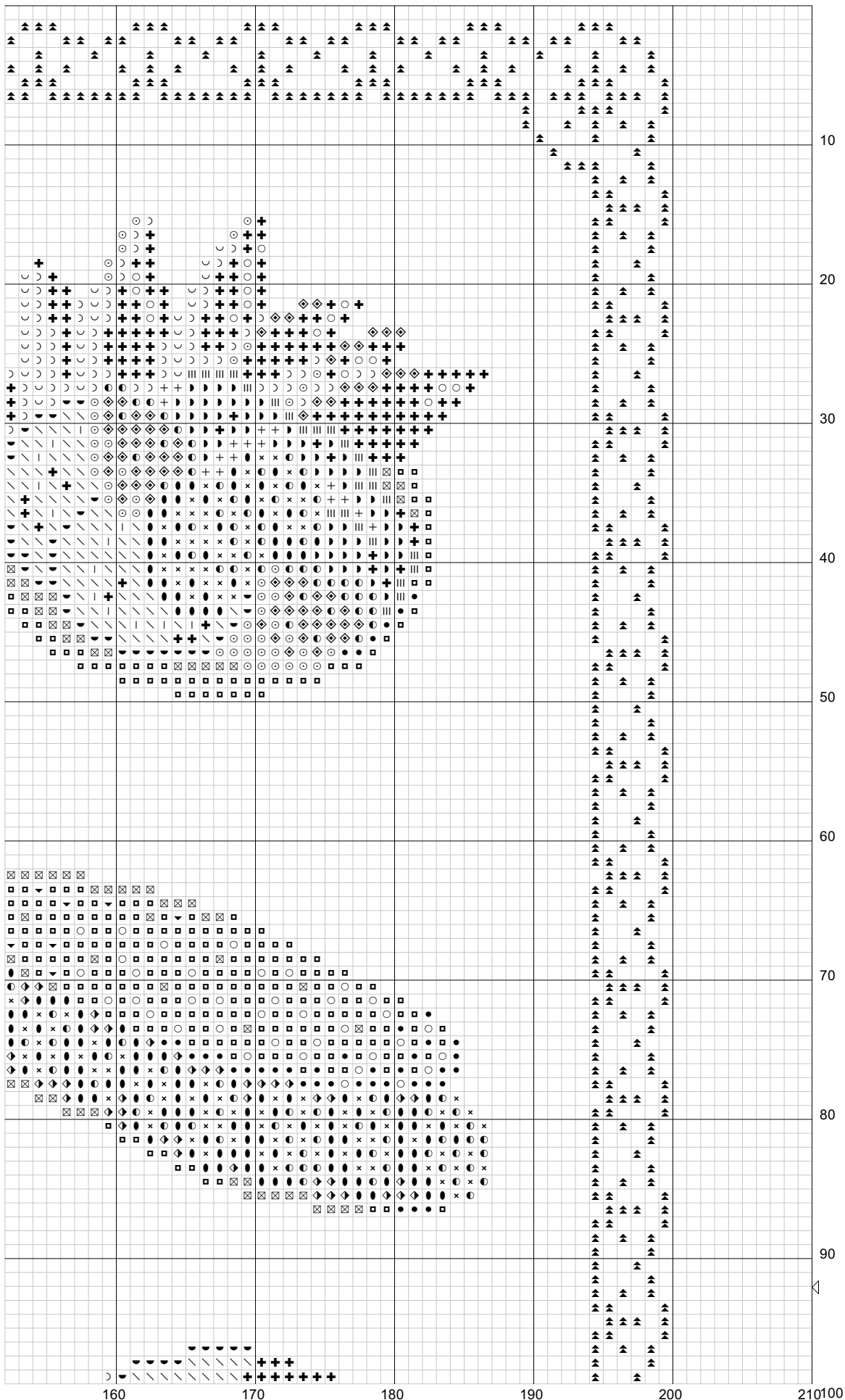
120

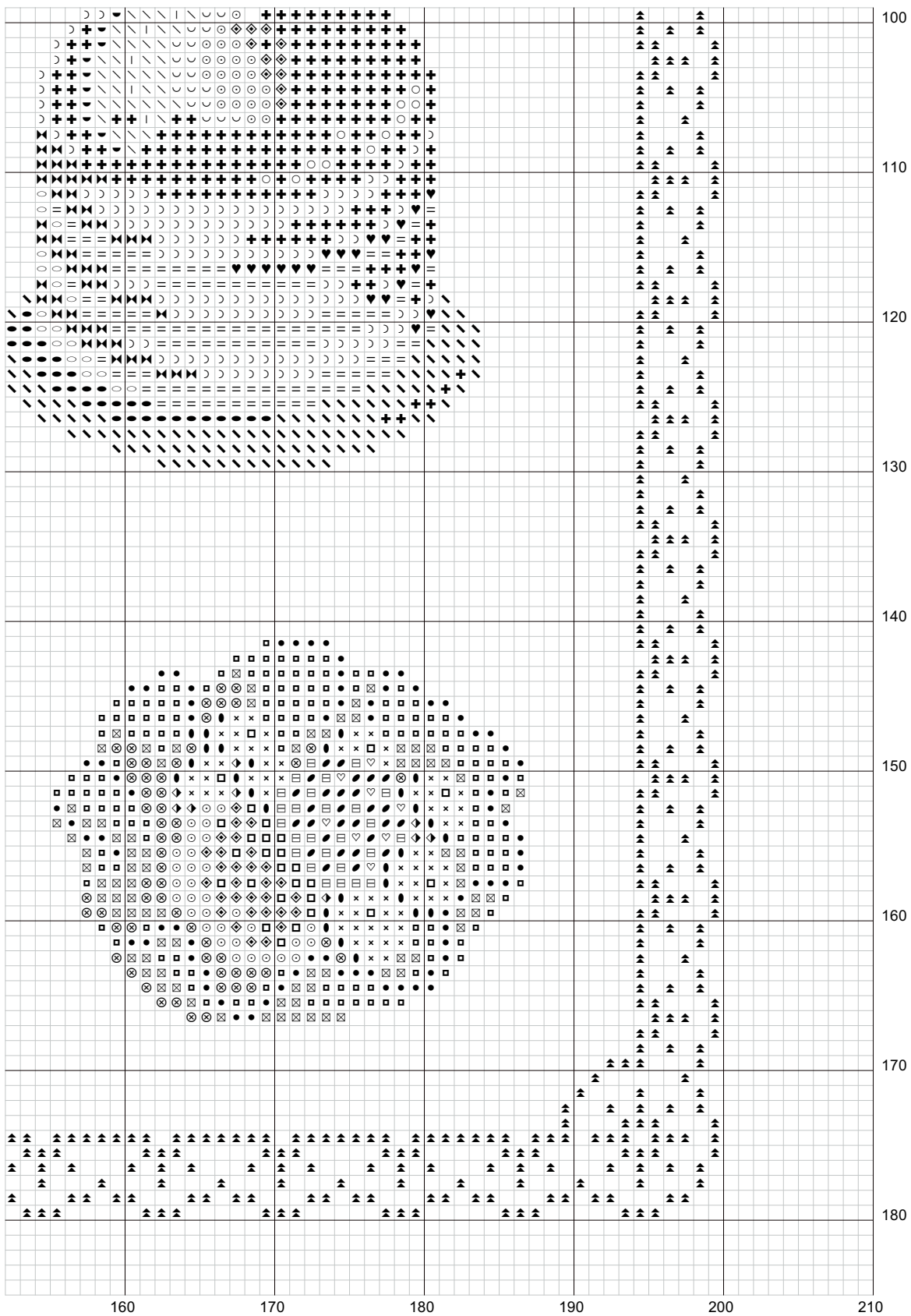
130

140

150







# P71.PAT

Author:	
Grid Size:	210W x 185H
Cloth Count:	6
Fabric:	
Design Area:	35." W x 30.83" H ( 179 x 179 stitches )

## Legend: DMC Stranded Cotton (strands)

○ 0 white (2)	◆ 814 garnet - dk (2)	▣ 840 beige brown - md (2)
▤ 3770 tawny - vy lt (2)	● 3829 Old Gold Very DK (2)	▶▶ 168 Very Lt. Pewter (2)
■ 951 tawny - lt (2)	+ 3852 Straw Vy Dk (2)	⊂ 169 Lt. Pewter (2)
□ 945 tawny - md (2)	▶ 3821 Straw (2)	♡ 931 antique blue - md (2)
♥ 3854 Orangey yellow (2)	3822 Straw lt. (2)	● 930 antique blue - dk (2)
= 721 orange spice - md (2)	∖ 745 yellow - lt pl (2)	▣ 310 black (2)
○ 720 orange spice - dk (2)	+ 746 off white (2)	934 black avocado green (2)
∪ 817 coral red - vy dk (2)	∪ 677 old gold - vy lt (2)	∪ 471 avocado green - vy lt (2)
⊙ 349 coral - dk (2)	▶▶ 676 old gold - lt (2)	∖ 472 avocado green - ul lt (2)
◆ 350 coral - md (2)	▲ 738 tan - vy lt (2)	# 1 ecru (2)
● 352 coral -lt (2)	● 437 tan - lt (2)	◀ 822 beige gray - lt (2)
○ 948 peach - vy lt (2)	▣ 436 tan (2)	▼ 3024 brown gray - vy lt (2)
* 3713 salmon -vy lt (2)	⊠ 435 brown - vy lt (2)	■ 3023 brown gray - lt (2)
∩ 761 salmon - lt (2)	⊗ 434 brown - lt (2)	□ 3022 brown gray - md (2)
▣ 3833 Deep Blush (2)	△ 938 coffee brown - ul dk (2)	★ 3787 brown gray - dk (2)
× 3832 Sustained Blush (2)	× 839 beige brown - dk (2)	∖ 5282 metallic gold (2)
● 3831 Raspberry DK (2)		

## Backstitches: DMC Stranded Cotton (strands)

— 435 brown - vy lt (2)	— 168 Very Lt. Pewter (2)	— 3787 brown gray - dk (2)
-------------------------	---------------------------	----------------------------